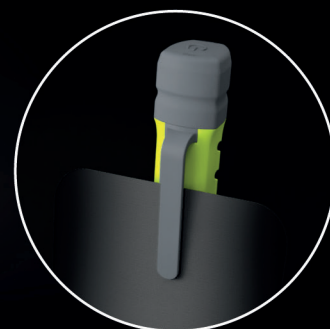


Energizer
PRO SERIES LIGHTS

INSPECTION LIGHT
7 638 900 448 177



A new range of quality, professional-grade lights designed with performance, flexibility and durability to meet the tough standards and demands while on the job!

Energizer Pro Series lights have **powerful LED technology** that includes **High CRI** for high-definition colour clarity. The Energizer Pro Series Inspection Light is non-conductive with no external metal parts and hybrid power to ensure you always have power and light when you need it!

This light is durable, **waterproof and dustproof (IP67)** to withstand demanding conditions.

This compact design was built with a versatile clip for **secure pocket storage** and **non-slip grip** for easy carry.

Plus, a pouch is included to attach to your belt while easily storing your light, batteries, and charging cable all in one place! A wide halo will surround you and light your task perfectly, allowing you to see each colour perfectly without any spot effect tiring your eyes.



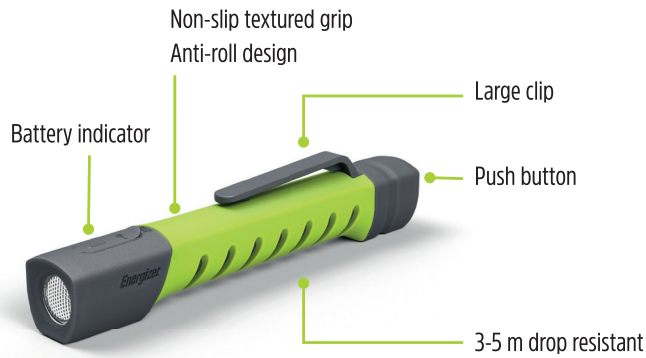
HIGH MODE/MODE INTENSE/MODO ALTO



jobs
done
right.

INSPECTION LIGHT

7 638 900 448 177



Multiple modes for versatility
Hi / Medium / Low



Pouch included

Features

Benefits

	Hybrid Power. Onboard with L-ion battery + cartridge for primary battery	Never run out of power with Lithium Ion. It can be recharged hundreds of times and will save you money and waste. Cartridges allow you to be ready if you need more time, as a complementary solution using Alkaline or lithium AAA standard batteries. USB C allows fast charging. Color indications will inform about remaining power (Green >50%; Yellow >25% ; Redflash <10%).
	Robust torch with 3 m drop test resistance and a Rechargeable battery, 5 m with primary battery	No worries. Your products will always be usable if dropped.
HIGH CRI	90+ CRI LED 5000 Kelvins 350 LUMENS	The color rendering delivered by the premium LED is close to natural color (12 x more than standard LED). It will ease your work in the dark, allowing you to see the colors and relief perfectly. The color is more comfortable for your eyes.
3 MODES 	1 LED + flood optic lens	A bright homogeneous halo will provide you a perfect light for close work without any shadows. It will be bright enough on top to allow you to move around safely. You will appreciate the benefits of great color rendering thanks to High CRI LED.
	Several power modes: High - Medium - Low	Will allow you to adjust the intensity to your need and save power to optimize your run time and comfort. You can use it also for close-up and precision work without damaging your eyes natural night vision.
IP67	Non conductive Waterproof (IP67) and Dustproof	Allow you to use your light in any weather and environmental conditions. Up to 1 m in the water during 1 hour - can resist any dust environment. Non-conductive; will allow any electrician or people operating with electricity to operate safely.
	Made for Professionals with anti-grease material, pouch and versatile clip	Electricians will enjoy working with it. A pouch will allow you to fix it onto your belt and will have an extra folder to hold complementary battery cartridges. Its versatile and large clip will allow you to attach it to your suit or belt. This product will never leave you. You will be able to wash or rinse it safely after work.

INSPECTION LIGHT

7 638 900 448 177

BRIGHTNESS

		WHITE
LED	1	1
		High / medium / low
COLOR RENDERING	90+ CRI	
COLOR TEMPERATURE	5000 K	

RECHARGEABLE LION	High	Medium	Low
LUMINOSITY (lumens)	350	225	100
BEAM DISTANCE (M)	40		
RUN TIME (H)	4	6	12

LITHIUM AAA	High	Medium	Low
LUMINOSITY (lumens)	100	80	40
BEAM DISTANCE (M)	25		
RUN TIME (H)	20	30	40

ALKALINE AAA	High	Medium	Low
LUMINOSITY (lumens)	100	60	30
BEAM DISTANCE (M)	40		
RUN TIME (H)	3	2	5



**NEVER RUN
OUT OF POWER**

The Pro Series are Hybrid :

Run on rechargeable and with primary batteries thanks to a cartridge included



POWER

LI ION BATTERY	Yes	700 MAH	3,7 V	REF 10840
PRIMARY BATTERY	Yes compatible	2 x	AAA	
TIME TO CHARGE	3 Hours			
USB IN	C			
USB OUT	N/A			
POWER INDICATOR	Y	High = Green >50%	Medium = Yellow > 25%	Low = Red

DIMENSIONS (product)

EAN	7 638 900 448 177	ITF	17 638 900 448 174
HEIGHT	26 mm	MOQ	4
LENGTH	159 mm		
DIAMETER	25 mm		
WEIGHT WITH BATTERIES	69 g		

OTHER

ACCESSORIES			
ROBUSTNESS	IP67	3 M DROP	1 M IN WATER
MATERIAL	POLYCARBONATE	SILICONE	
MAGNETS	NO		
POUCH / HOLSTER	YES		
LANYARD	NO	Compatible	

Energizer
PRO SERIES LIGHTS

