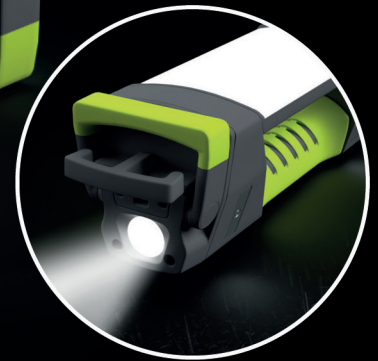
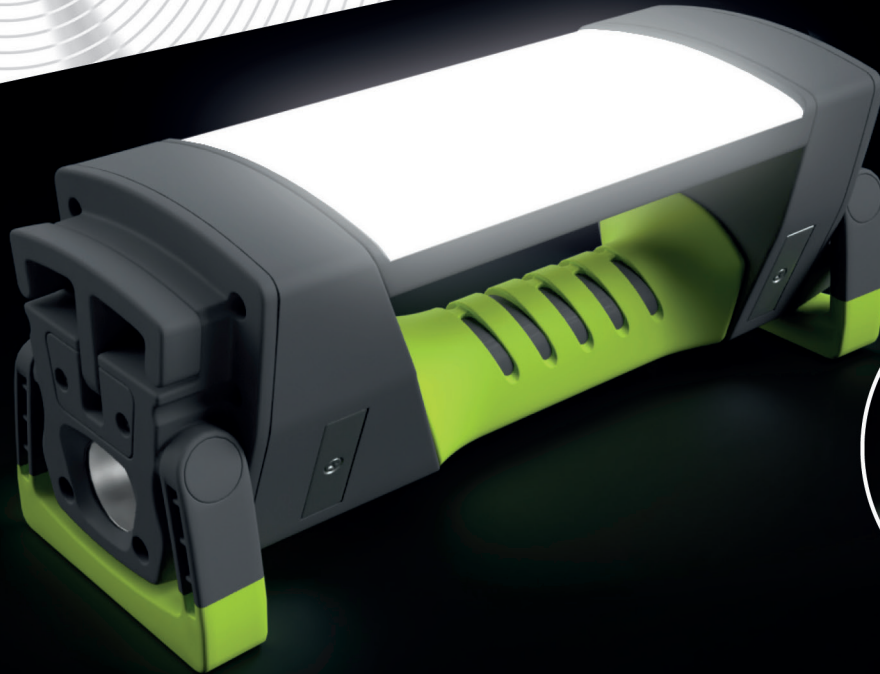


Energizer
PRO SERIES LIGHTS

WORK LIGHT
7 638 900 448 160



The Energizer WORKLIGHT is the best versatile tool professionals can expect to work with. This Waterproof, Dustproof, High CRI Multi-colored Worklight is another innovative Energizer solution.

Featuring bright, **durable and energy efficient LED technology** (12 X Brighter than Standard LED), users get a bright, lightweight, hands-free solution with ample run time capability. It is a perfect light for home, work and outdoor activities in any weather conditions. **High CRI LED** provides the user with clear, high-definition colour clarity. With the advanced dimming feature, users can control the intensity of light from 100% to 10%. The low battery indicator, located in the front of the light, will flash when battery is low, warning consumers that it is almost time to change the batteries. Powered with either the Rechargeable Lithium-Ion battery or 3AA Energizer batteries.

Many ways to use your worklight are permitted using magnets, wall mount, hook, tripod screw to adapt the light to your need and light up to 100m², thanks to **powerful 1000 lumens LED during 6 hours.**

You need more power, 360°: add another worklight to the first one using magnets (you can add up to 5 together) and to give you a definitively bright area. They can be used in connected mode - plugged-on power with one lighting all of them at the same time.

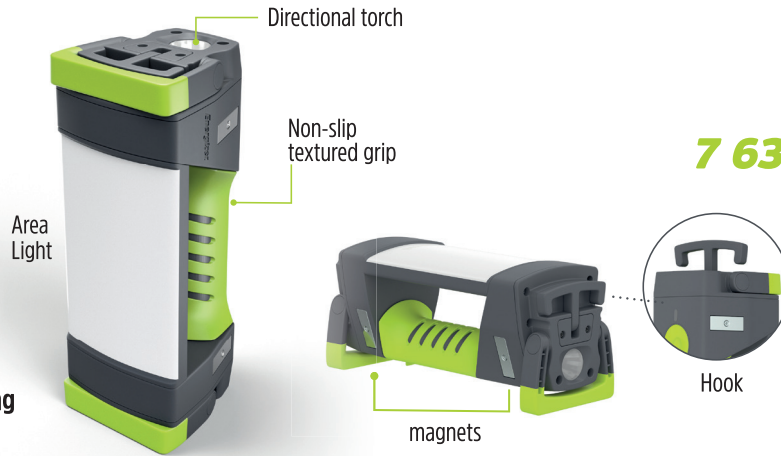
And the worklight can be also used as a handheld torch thanks to its **directional LED of 400 lumens.** A powerful focus beam will **spot up to 150 m distance.**

If you had to chose only one light solution, Worklight Pro Series would be the one.



HIGH MODE

jobs
done
right.



WORK LIGHT

7 638 900 448 160

Multiple modes for versatility
Hi / Medium / Low / Flashing

Features

Benefits

<p>Battery Insertion</p>	<p>Hybrid Power. Onboard with L-ion battery + cartridge for primary battery</p>	<p>Never run out of power with Lithium Ion. It can be recharged hundreds of times and will save you money and waste. Cartridges allow you to be ready if you need more time, as a complementary solution using alkaline or lithium AA standard batteries. USB C allows fast charging. Color indications will inform about remaining power (Green >50%; Yellow >25% ; Redflash <10%).</p>
	<p>Robust torch with 3 m drop test resistance and a Rechargeable battery, 5 m with primary battery</p>	<p>No worries. Your products will always be usable if dropped.</p>
<p>HIGH CRI</p>	<p>90+ CRI LED 5000 KELVINS 1000 Lumens (area) / 400 (directional)</p>	<p>The color rendering delivered by the premium LED is close to natural color (12 x more than standard LED). It will ease your work in the dark, allowing you to see the colors and relief perfectly. The color is more comfortable for your eyes and will allow you to light 100 m² perfectly. The directional light will allow you to point out a long distance beam (150 m) to identify where to go, with a medium halo to move safely.</p>
	<p>Versatile lighting tool solution = Wide area light + directional LED</p>	<p>A great 2 in one product you will enjoy in your day to day work life. A bright homogeneous halo will provide you a perfect light for close-up work without any shadows, lighting a large surface (around 100 m²). It will be the right torch to work with colleagues or inspect paint rendering on walls. You will appreciate the benefits of great color rendering thanks to High CRI LED. The Directional light, with its 400 lumens, will provide you with a long distance lighting solution to move safely and operate around the workplace.</p>
	<p>Several power modes: High - Medium - Low for area light. High only for directional</p>	<p>Will allow you to adjust the intensity to your need and save power to optimize your run time and comfort. You can use it also for close-up and precision work without damaging your eyes natural night vision.</p>
<p>IP67</p>	<p>Non conductive - Waterproof (IP67) and Dustproof</p>	<p>Allows you to use your worklight in any weather or environmental conditions. Can last 1 hour in up to 1m of water. Resistant to dust. Non-conductive; will allow people operating with electricity to operate safely.</p>
	<p>Made for Professionals with anti-grease material, trip-pod screw, hooks and magnets, hanger hook and movable feet</p>	<p>Professionals will enjoy working with this versatile convenient Worklight. It can be attached to many surfaces either using magnets or hooks. The tripod screw will also be an option to display the worlight appropriately in the room where you operate. If you want to light stronger or 360°, you can add several of these Worklights together according to your need using the magnets. On top, if you connect one of them using the USB to the power, it will light all the other together saving batteries.</p>

WORK LIGHT

7 638 900 448 160

BRIGHTNESS		
		WHITE
LED	2	2
		High / medium / low for area High for directional
COLOR RENDERING	90+ CRI	
COLOR TEMPERATURE	5000 K	

RECHARGEABLE LION	High	Medium	Low	beam distance
LUMINOSITY (lumens)	1000	500	100	
BEAM DISTANCE (M)	400			150
RUN TIME (H)	6	12	60	

LITHIUM AAA	High	Medium	Low	beam distance
LUMINOSITY (lumens)	250	100	30	
BEAM DISTANCE (M)	175			150
RUN TIME (H)				

ALKALINE AAA	High	Medium	Low	beam distance
LUMINOSITY (lumens)	250	100	30	
BEAM DISTANCE (M)				150
RUN TIME (H)	10	20	40	



NEVER RUN OUT OF POWER

The Pro Series are Hybrid :
Run on rechargeable and with primary batteries thanks to a cartridge included



POWER				
LI ION BATTERY	Yes x2	5200 MAH	6 V	REF 18650
PRIMARY BATTERY	Yes compatible	3 x	AA	
TIME TO CHARGE	8 hours			
USB IN	C			
USB OUT	A			
POWER INDICATOR	Y	High = Green >50%	Medium = Yellow > 25%	Low = Red

DIMENSIONS (product)	
EAN	7 638 900 448 160
ITF	17 638 900 448 167
MOQ	4
HEIGHT	225 mm
LENGTH	94 mm
DIAMETER	92 mm
WEIGHT WITH BATTERIES	805 g

OTHER			
ACCESSORIES			
ROBUSTNESS	IP67	3 M DROP	1 M IN WATER
MATERIAL	POLYCARBONATE	SILICONE	
MAGNETS	YES	2	
POUCH / HOLSTER	Screw		
LANYARD	Yes	2 and 1 hook	

Energizer® PRO SERIES LIGHTS

