

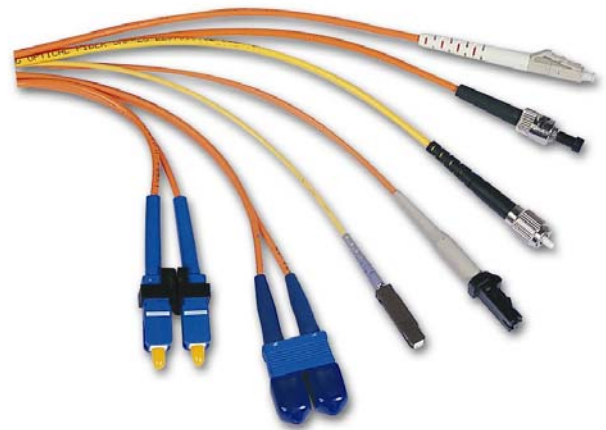
Optical Fiber Patch cord

Features

- Low Insertion Loss
- High back reflection

Applications

- CATV Fiber Optics Link
- SDH Fiber Transmission
- Test equipment



Performance Specification

Specification		
Configuration		
Fiber type	G652D or G657A2 Single mode fiber OM1, OM2, OM3, OM4 Multimode fiber	
Cable type	0.9mm, 1.6mm, 1.8mm, 2.0mm, 3.0mm LSZH jacket, Yellow or customized color.	
Connector type	FC, SC, ST, LC	
Cable length	1M or customized requirement	
Optical Performance		
Insertion Loss	Typical	≤ 0.25dB
	Max	≤ 0.30dB
Return Loss	≥ 50.0 dB for UPC, ≥ 60.0 dB for APC,	
Repetitiveness	≤ 0.2dB	
Interchangeability	≤ 0.2dB	
Durability (500 mating)	≤ 0.2dB	
Temperature range		
Operating temperature	-40~85℃	
Storage temperature	-40~85℃	