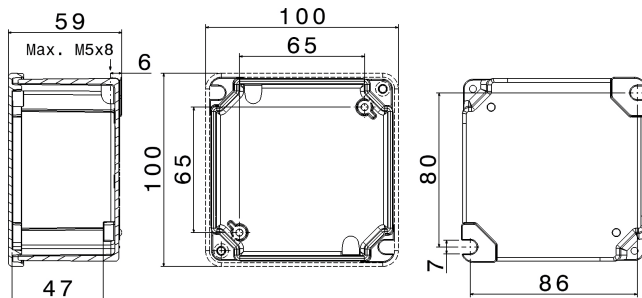




**SERIES UNIBOX
ENCLOSURE**
CODE **520009**



Datasheet

Electrical characteristics

Insulation Class	I
Rated insulation voltage	-
Rated operating voltage	-
Dissipable Power	10W

Mechanical characteristics

Manufacturing material	Aluminium alloy (EN 46100)
Treatment type	Fluorozirconic passivation
Surface finishing	Painted grey RAL 7042
Color	Grey RAL 7042
Execution	Wall mounting
Height Box	54 mm
Cover height	9,5 mm
Cover type	Blind
N. of modules on DIN rail	-
Hole type	-
Window type	-
Protection degree	IP66/IP67
Shock resistance	IK08 according to IEC/EN 62262
Resistance to Glow wire	-
Flame rating according UL94	-
Corrosivity category	C4 (ISO 9223)
Working Environment Temp.	Min: -40°C ;Max: +90°C
Warehousing Temperature	Min: -50°C ;Max: +90°C
Dimensions	100X100X59 mm
Internal dimensions	88X88X44 mm
Net Weight	280 G

Reference Standards and Directives

ETIM classification	EC000058
Certification and approval marks	NYCE COLOMBIA, CE, UKCA
Directives	2014/35/EU (LVD)

Reference Standards	EN 60670-1:2005/A1:2013, EN 60670 22:2006, EN 60670-1:2005/AC:2010, EN 60670-1:2005, EN 62208:2011, EN 60670 1:2005/AC:2007
---------------------	---

The images are purely indicative. Palazzoli reserves the right to make changes without notice.