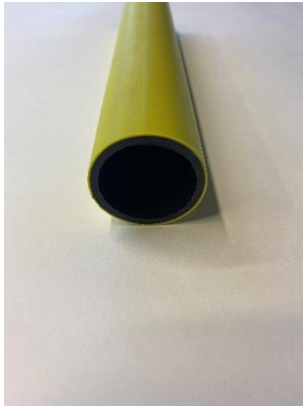


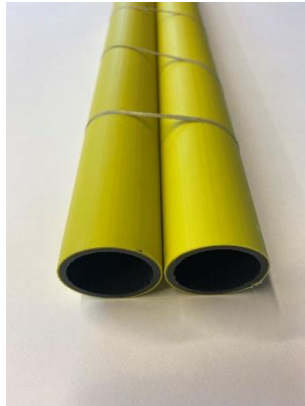
## DK\_DS\_40x3.4mm Subducts



### Single-, Dual-, Triple- & Quad wrapped 40x3.4mm subducts



**Single**



**Dual Wrapped**



**Triple Wrapped**



**Quad Wrapped**

### Product Description

Emtelle 40x3.4mm wrapped subducts. The subducts can be wrapped in four different configuration.

1x40x3.4mm – 2x40x3.4mm – 3x40x3.4mm – 4x40x3.4mm.

The ducts are marked with different print for easy identification.

Example: Duct 1= “AAAA”, Duct 2= “BBBB”, Duct 3= “CCCC”, Duct 4= “DDDD”.

### Design Features

- ⊗ Can be supplied in different colours and with different stripes.
- ⊗ Can be supplied with customized print.
- ⊗ Ribbed inner surface and Emtelle's unique lowfriction EM-Liner.
- ⊗ Short time blowing pressure 14bar.

### Application Notes

The ducts can be direct buried and is suitable for cable protection.

### Specifications

**Rawmaterial:** HDPE.

**Outer diameter:** 40mm.

**Inner diameter:** 33.2mm.

**Weight per meter:** 0,375kg/m.

**Wall thickness:** 3.4mm.

**Max Installation Tension:** 75kg (0.78kN).

**Minimum bend radius:** 15x outer diameter.

**Temperature:** Storage and Transport -15°C to 50°C. Installation -15°C to 40°C.

This document is intended as a guide only. Whilst the information it contains is believed to be correct, Emtelle can take no responsibility for actions taken based on the information contained in this document. Emtelle reserves the right to make changes to this document without notice. Purchase of Emtelle products does not convey any licence under patents or other intellectual property rights owned by third parties. All sales of product are subject to Emtelle's terms and conditions of sale only, which can be found on Emtelle's website. This document is protected by copyright (c) Emtelle Group [2021]. The products depicted are protected by intellectual property rights. Any unauthorized copying of this document or of our products is prohibited and Emtelle UK Limited will take action to prevent any infringement of its rights and to claim damages for the loss that it suffers. [www.emtelle.com](http://www.emtelle.com)

## DK\_DS\_40x3.4mm Subducts

### Duct Performance

Duct Performance		
Impact test 5kg	DS EN 61386	OK
Compression	DS EN 61386	>450N
Yield stress	EN ISO 6259	>17MPa
Ring stiffness	EN ISO 9969	$\geq 8\text{kN/m}^2$
Logitudinal reversion	EN ISO 2505	<3%
Coefficient of friction	S201-10150	$\leq 0.12$
Leak test	Internal	Pass

**\*Leak test: Tested in a closed system at min. 6 bar to max. 9 bar (5min)**

### Packaging and Labelling

Product Description	Supply Length	Drum size
Single 1x40x3,4mm	1x2000m	2200x1800x1200mm
Dual Wrapped 2x40x3,4mm	2x1000m	2200x1800x1200mm
Triple Wrapped 3x40x3,4mm	3x600m	2200x1800x1200mm
Quad Wrapped 4x40x3,4mm	4x400m	2200x1800x1200mm

All products suitably packaged in recyclable materials and clearly labelled with Emtelle Product Code and Description where possible.

### END OF SPECIFICATION