



FX60 LED

FX6040000



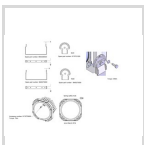
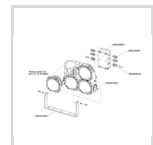
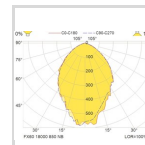
FX60 18000 850 230 M25 NB FG

Ex de LED floodlights are applicable for zone 1 areas. Seawater resistant aluminium anodized module housing for excellent cooling. Stainless steel frame and mounting bracket. The floodlights are designed according to rules of maritime classification societies, additional VDE and IEC/EN.

[View description text >](#)

Barcode 4036538274183

Stock code B



Technical data	
EX gas classification:	II 2G Ex db IIC T4 Gb
EX dust classification:	II 2G
IP classification:	66/67
Minimum ambient temperature (°C):	-50
Maximum ambient temperature (°C):	55
Minimum storage temperature (°C):	-60
Maximum storage temperature (°C):	80
Dimensions	
Net weight (kg):	20,5
Gross weight (kg):	22,5
Length (mm):	444
Width (mm):	225
Height (mm):	475
Body	
Body material:	Seawater resistant Aluminium modules build in Stainless Steel 316 frame
Colour of body:	Unpainted
Material junction box:	GRP

Ballast/Driver	
Type of ballast/driver	IC driver
Number of ballast/driver	
Light data	
Light source	
Number of lamps	
Lamp power (W)	
Nominal lumen value (lm)	
Colour rendering and colour temperature	
System Lumen Out	
System Lumen/Watt	
Rated system lifetime at Ta 45°C	
Termination	
Type of cable gland	M25-Nickel
Number of cable glands	
Minimum cable diameter	
Maximum cable diameter	
Termination	3x6mm² double p
Mounting	Bracke

Optic	
Optic:	NB = Narrow beam
Material of diffuser:	Flat glass
Output angle (°):	60

Electrical data	
Minimum Voltage -10% (VAC):	230
Maximum voltage +10% (VAC):	230
Minimum frequency -5% (Hz):	50
Maximum frequency +5% (Hz):	60
Minimum voltage in DC:	-
Maximum voltage in DC:	-
Total consumption (W):	160
Power factor:	0,9
Number of luminaires on a 10A MCB type B (80% load):	11
Number of luminaires on a 10A MCB type C (80% load):	11
Number of luminaires on a 16A MCB type B (80% load):	17
Number of luminaires on a 16A MCB type C (80% load):	17
Electromagnetic compatibility:	EMC 1 / Class B

Minimum core diameter
Maximum core diameter
Remarks
Remarks
Cable entry:2xM25x1.5 brass nickel pla

Tools & Knowledge

- Smart tools
- Navigation Light Configurator
- Technical information
- Quality and testing
- Ex Norms
- Working from home

Company

- Contact us
- Careers
- About us
- Mission & Values
- GlamoxTV
- Subscribe to newsletter