

LANmark Patchpaneler for Snap-in konnektorer

LANmark Maritime and Industry Fixed Patch Panel 24 port

Nexans art.nr.: N52m.664

- Compatible with all LANmark Snap-In connectors
- 24 Snap-In ports with shutters
- Clip-on mechanism
- Exclusive Auto-Connect Earthing system
- Universal design supporting Unscreened and Screened connectors
- Tie Wrap features for cable strain relief
- Robust stainless steel construction

BESKRIVELSE

Nexans Snap-In range of patch panels are designed to accommodate any of the Snap-In connectors in the LANmark product family (LANmark-7A, LANmark-7, LANmark-6A, LANmark-6, and LANmark-5).

The Snap-In panels feature an exclusive Clip-On system to secure the connector in the panel and to provide a simple means of earthing shielded connectors to facilitate installation. Connection of the panel to earth is achieved with a unique Auto-Connect feature removing the need for individual bonding conductors.

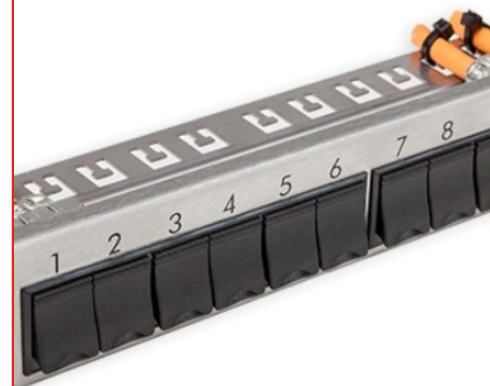
The panels also have a series of complementary cable management products such as blank panels and patch cord guides.

The patch panels are designed for standard 19" enclosures, are 1U high, and support the following common features:

- 24 Ports with shutters
- Designed for Screened and Unscreened Snap-In connectors
- Compatible with all performance categories of connector
- Clip-On mechanism for simple earthing
- Exclusive rear cable management facilities
- Robust construction from 316 grade stainless steel for corrosion resistance
- Printed numbering for port labelling

This panel has "T" slots to facilitate strain relief of cables using cable ties for the protection of connector terminations from pulling forces.

A bag of 25 black nylon cable ties is included with every panel.



LANmark

STANDARDER

Internasjonal ISO/IEC 11801

LANmark Patchpaneler for Snap-in konnektorer

LANmark Maritime and Industry Fixed Patch Panel 24 port

KARAKTERISTIKKER

Konstruksjonsegenskaper

Farge	Svart
Materiale	Steel

Dimensjonsegenskaper

Høyde	1 U
Dybde	75 mm
Bredde	19 inches
Vegtykkelse (mm)	- mm
Vekt pr. stk. (ca.)	- kg

Bruksegenskaper

Bruksområde	Faste installasjoner
Motstand mot vibrasjon	Høy
Mechanical Resistance	Good mechanical resistance
Mekanisk levetid/koblingsoperasjoner	-
Antall porter	24
Forpakning	Eske