

**IE-XM-RJ45/RJ45****Weidmüller Interface GmbH & Co. KG**

Klingenbergstraße 26

D-32758 Detmold

Germany

www.weidmueller.com



Mounting rail outlet, RJ45 junction design according to IEC 60603-7-51

**General ordering data**

Version	Mounting rail outlet, RJ45, RJ45-RJ45 coupler, IP20, Cat.6 (ISO/IEC 11801)
Order No.	<a href="#">8879050000</a>
Type	IE-XM-RJ45/RJ45
GTIN (EAN)	4032248614844
Qty.	1 pc(s).

Creation date July 23, 2021 3:18:41 PM CEST

Catalogue status 23.07.2021 / We reserve the right to make technical changes.

## IE-XM-RJ45/RJ45

Weidmüller Interface GmbH &amp; Co. KG

Klingenbergstraße 26

D-32758 Detmold

Germany

www.weidmueller.com

## Technical data

## Dimensions and weights

Net weight 49 g

## Temperatures

Operating temperature -25 °C...70 °C

## General data

Connection 1	RJ45	Connection 2	RJ45
Description of article		Configuration	1 TE pitch dimension acc. to DIN 43880. insta-compatible Installation flange with mounting frame
Wiring	RJ45-RJ45 coupler Colour-coded pin assignment acc. to EIA/TIA T568 A (copper)	Colour	Light Grey
Housing main material	PA 66, UL 94: V-0	Category	Cat.6 (ISO/IEC 11801)
Type of mounting	TS 35	Protection degree	IP20
Plugging cycles	750		

## Electrical properties

Contact resistance	≤ 20 mΩ	Current-carrying capacity at 50 °C	1 A
Dielectric strength, contact / contact	≥ 1000 V DC	Dielectric strength, contact / shield	≥ 1500 V DC
Insulation strength	500 MΩ	PoE / PoE+	conforming to IEEE 802.3at

## General standards

Certificate No. (DNVGL)	TAE00003EW	Certificate no. (cULus)	E316369
Connector standard	IEC 60603-7-5		

## Classifications

ETIM 6.0	EC001121	ETIM 7.0	EC001121
ETIM 8.0	EC001121	ECLASS 9.0	27-44-03-90
ECLASS 9.1	27-44-03-90	ECLASS 10.0	27-44-03-90
ECLASS 11.0	27-44-03-90		

## Approvals

Approvals



ROHS	Conform
UL File Number Search	E316369

## IE-XM-RJ45/RJ45

**Weidmüller Interface GmbH & Co. KG**  
Klingenbergstraße 26  
D-32758 Detmold  
Germany

[www.weidmueller.com](http://www.weidmueller.com)

## Technical data

### Downloads

Approval/Certificate/Document of Conformity	<a href="#">GOST Approval</a> <a href="#">Germanischer Lloyd</a> <a href="#">DUXR.E316369</a>
Engineering Data	<a href="#">STEP</a>
Engineering Data	<a href="#">EPLAN, WSCAD, Zuken E3.S</a>
User Documentation	<a href="#">MAN IE GUIDE DE</a> <a href="#">MAN IE GUIDE EN</a> <a href="#">Manual</a>
Catalogues	<a href="#">Catalogues in PDF-format</a>
Brochures	<a href="#">FL FIELDWIRING EN</a> <a href="#">PI PROFINET CABLING EN</a> <a href="#">PI PROFINET CABLING EN</a>

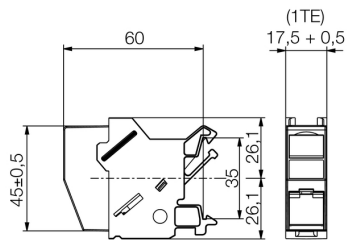
**IE-XM-RJ45/RJ45**

**Weidmüller Interface GmbH & Co. KG**  
Klingenbergstraße 26  
D-32758 Detmold  
Germany

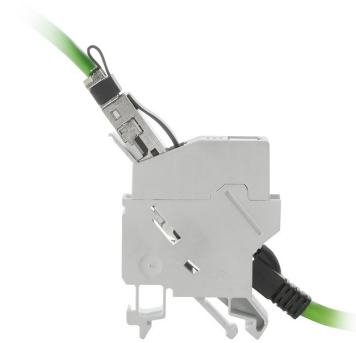
[www.weidmueller.com](http://www.weidmueller.com)

**Drawings**

**Dimensioned drawing**



**Product image**



**Product image**

