

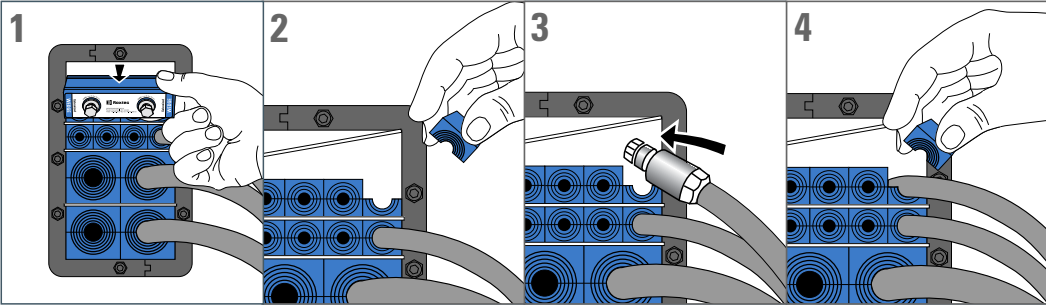
# Disassembly and installation of additional cables

Untighten the bolts of the wedge and take it out.

Take out the module/s where the new cable/s will be routed.

Pull the cable/s through.

Adapt, lubricate and insert modules and the wedge acc. to assembly instructions.

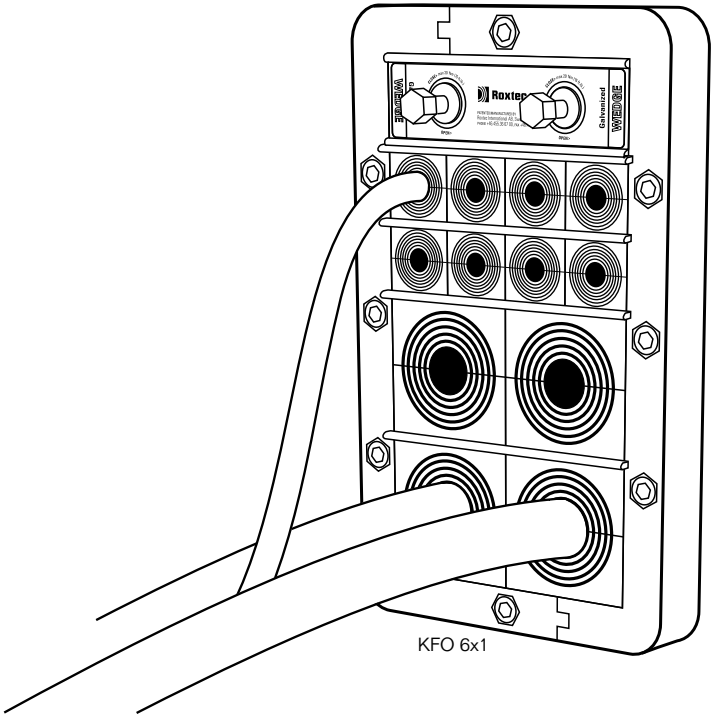




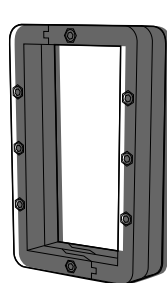
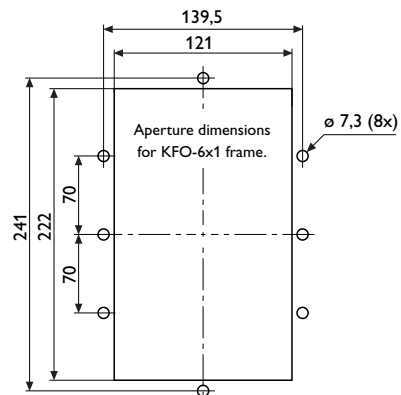
Assembly  
Instruction  
KFO 6x1  
for cabinets



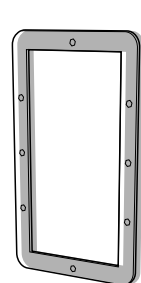
Roxtec International AB  
Box 540. SE-371 23 Karlskrona, SWEDEN  
PHONE +46.455.36 67 00, FAX +46.455.82 012  
E-MAIL [info@roxtec.com](mailto:info@roxtec.com), [www.roxtec.com](http://www.roxtec.com)



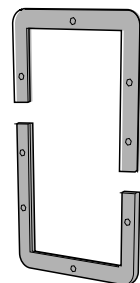
# Assembly Instruction KFO 6x1 For Cabinets



KFO 6x1  
**1x**



Gasket  
**1x**



Distance Plate  
**1x**



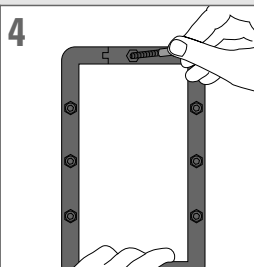
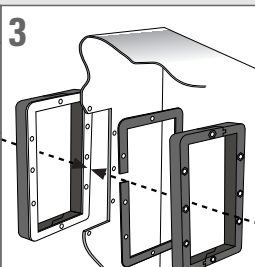
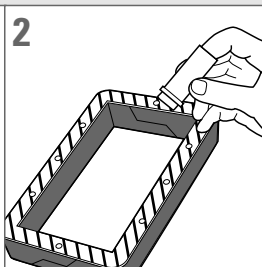
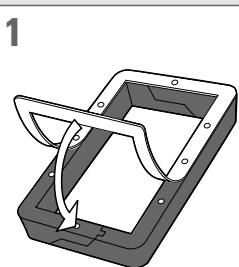
Lubricant  
**1x**

When you have made the hole, Fasten the gasket onto one KFO frame part on the side with **NONE** countersink hexagon boltholes\*.

Lubricate the gasket.

Place the KFO part with the gasket against the wall on the outside. The distanceplate and second KFO part shall be placed from the inside.

Fasten the frame with the bolts from the outside. Place the nuts on the inside\*.

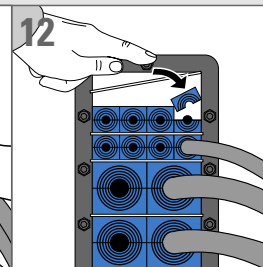
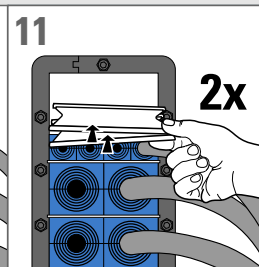
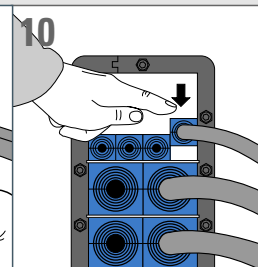
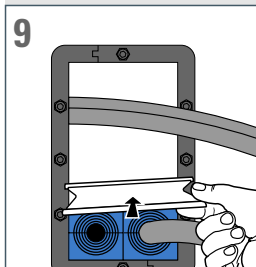


Insert a stayplate on top of every finished row of modules.

Continue to fill the rest of the packing space with modules and cables between the stayplates.

Before the last row of modules, insert two stayplates.

Insert the final row of modules between the stayplates.

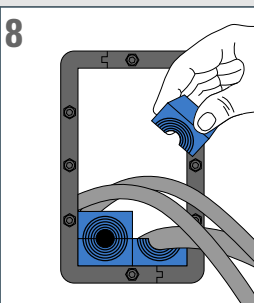
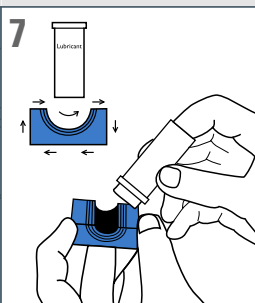
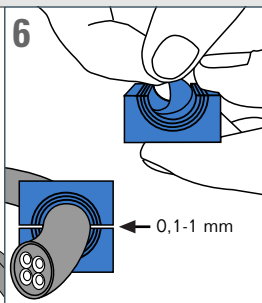
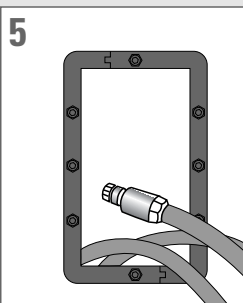


Insert the cables through the opening.

Adapt the modules to the cables. Achieve a 0,1-1 mm gap between the module halves.

Lubricate the modules on all long sides!

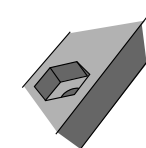
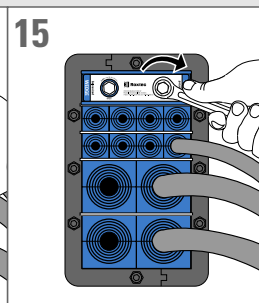
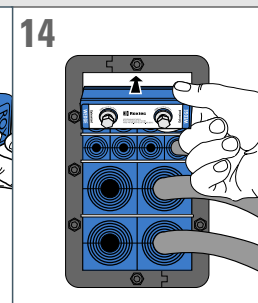
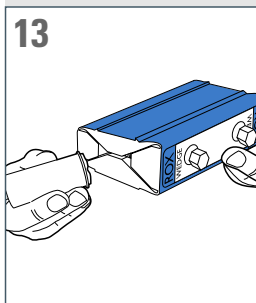
Insert the modules into the frame.



Lubricate both sides of the wedge.

Insert the wedge into the frame.

Tighten the bolts until mechanical stop or max 20 Nm and the wedge will compress and seal the transit.



\*One side of a KFO part has countersink hexagon boltholes to cover boltheads and nuts.