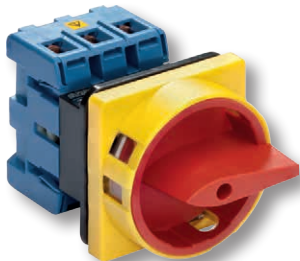


According to IEC 60947-3, EN 60947-3, VDE 0660 part 107



Rated Thermal Current $I_U/I_{th}/I_{the}$					
				A	63
Rated Insulation Voltage U_i ¹					
				V	690
Rated Impulse Withstand Voltage U_{imp}					
				kV	6
Rated Operational Current I_e					
AC-21A	Switching of resistive loads, including moderate overloads			A	63
AC-22A	Switching of combined resistive or low inductive loads including moderate overloads		220 V–500 V	A	63
			660 V–690 V		55
Rated Utilization Category					
AC-3	Direct-on-line starting	3 phase, 3 pole	220 V–240 V	kW	11
			380 V–440 V		18,5
			500 V		22
			660 V–690 V		15
AC-23A	Frequent switching of motors or other high inductive loads	3 phase, 3 pole	220 V–240 V	kW	11
			380 V–440 V		22
			500 V		30
			660 V–690 V		18,5
Short Circuit Protection					
Max. fuse size		gG-characteristic		A	63
Rated short-time withstand current		(1 s-current)		A	580
For connections with insulated ring and fork type cable terminal - copper wires only					
Single-core or stranded wire				mm ²	16
Flexible wire				mm ²	10
Flexible wire with sleeving in accordance with DIN 46228				mm ²	10

¹ Valid for lines with grounded common neutral termination, overvoltage category III, Other values on request.

Miscellaneous

Minimum Voltage:	on request		
Power loss per contact at I _U :	2,2 W		
Resistance to vibration:	min. 4 g, 2-100 Hz, 1,6 mm		
Resistance to shock:	min. 6 g, 6 ms		
Ambient Temperature of Stages :	open at 100 % I _U /I _{th}	50 °C during 24 hours with peaks up to 55 °C	
	enclosed at 100 % I _{the}	35 °C during 24 hours with peaks up to 40 °C	
Storage temperature:	-40 °C to 85 °C (in case of temperature below -5 °C no shock load permissible)		

Approvals and Standards

IEC 60947 EN 60947			 GB14048.3			
-----------------------	---	---	---	---	---	---

USA / Canada



Rated Thermal Current $I_U/I_{th}/I_{the}$				
			A	60
Rated Insulation Voltage U_i				
			V	600
Rated Operational Current I_e				
Pilot Duty:		Heavy	VAC	A600
Ampere Rating	Resistive or low inductive loads	ON/OFF 1-0-2	600 V 600 V	A 60 60
Max. Permissible Wire Gage - copper wires only				
	Single-core or stranded wire		AWG	6
	Flexible wire: AWG wire (without sleeving)		AWG	6
Ratings				
	Standard motor load, DOL-Rating (similar AC-3)	3 phase 3 pole	110 V–120 V 220 V–240 V 440 V–480 V 550 V–600 V	HP 5 10 20 20

Miscellaneous

Minimum Voltage:	on request	
Power loss per contact at I_U :	2,2 W	
Resistance to vibration:	min. 4 g, 2-100 Hz, 1,6 mm	
Resistance to shock:	min. 6 g, 6 ms	
Ambient Temperature of Stages :	open at 100 % I_U/I_{th} enclosed at 100 % I_{the}	50 °C during 24 hours with peaks up to 55 °C 35 °C during 24 hours with peaks up to 40 °C
Storage temperature:	-40 °C to 85 °C (in case of temperature below -5 °C no shock load permissible)	

Approvals and Standards

IEC 60947
EN 60947

