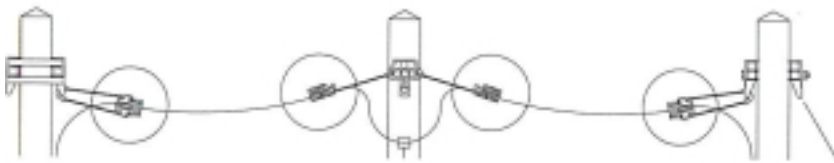


## Anchoring clamps AC35 / AC68 / AC810

### Anchoring clamps for figure-8 cables



Dielectric or AAA messengered cables  
with HDPE or MDPE outer sheaths



### Description

These anchoring clamps are made of high strength materials to offer high resistance to mechanical stress and bad weather (humidity, UV radiation).

A tapered opening on one side of a highly reinforced conical body, a pair of tapered thermoplastic jaws and a flexible bail wire with a thimble provide a system designed as a wedge inside a wedge to give maximum strength and grip. All parts of the clamp are secured together to prevent any loss of parts during installation.



**AC35 260**



**AC68 260**



**AC810 500**

### Advantages

#### ▪ Easy

With the Telenco anchoring clamp installation procedures are very uncomplicated. The design of the clamp reduces the possibilities of misuse and therefore lowers the risk of injuries during emplacement. Because this technology is so simple to use it can easily and quickly be introduced into installation practices at nominal training costs, without radically changing other working practices.

#### ▪ Quick

By using Telenco anchoring clamps the installation time is cut down to a minimum. The time usually spent preparing the cable (separation and stripping of the messenger) can be saved and the use of spanners, knives, cable strippers, is no longer required.

#### ▪ Safe

As no cutting tools are required when using Telenco clamps to secure the cables aloft, there is an enormous reduction to the risk of injury to the linemen. Incorrect installation and damage to cables are kept to an absolute minimum. Also, the fact that the messenger has not been cut, means its electrical continuity is preserved and can be utilised for earthing and bonding (see EC13).

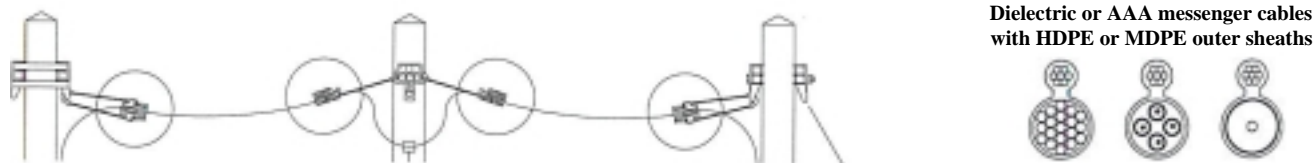
#### ▪ Reliable

Tests carried out in laboratories and on test rigs have proved that Telenco clamps offer a greater protection for figure-8 cables than other systems currently in use against wind induced vibrations, therefor improving the reliability of aerial telecom networks.

#### ▪ Savings

In installation time, training time, products, maintenance.

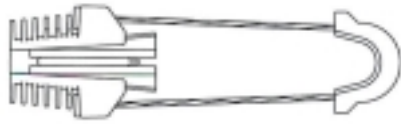



A 1-3 page 2



Clamp range

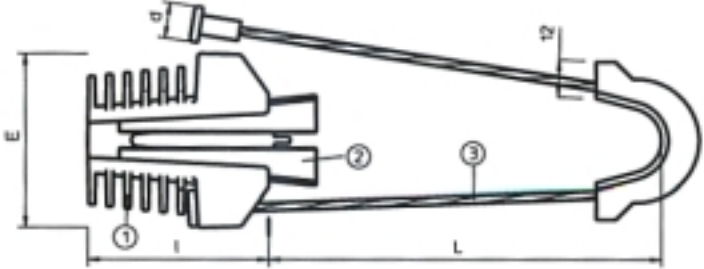
These anchoring clamps allow an easy and quick installation of figure-8 cables with all aluminium alloy (AAA) or dielectric messengers (Kevlar, FRP) by gripping directly onto the HDPE or MDPE messenger outer sheath.

**Warning** : These clamps must not be used with LDPE sheathed figure-8 cables (the cable may slip in the clamp according to the quality of the messenger insulation).

Anchoring clamp	Figure-8 cable with AAA or dielectric messenger HDPE or MDPE outer sheath			
	Copper pairs	Fibre optic	CATV	
				
Clamp reference	Messenger diameter over insulation		Cable stringing tension*	
	min.	max.	min.	max.
AC35 260	3 mm 0.12 in	6mm 0.24 in	40 daN 90 lbs	100 daN 220 lbs.
AC68 260	6 mm 0.24 in	8 mm 0.31 in	40 daN 90 lbs	140 daN 300 lbs.
AC810 500	8 mm 0.31 in	10 mm 0.39 in	60 daN 130 lbs	200 daN 450 lbs.

\* A x3 safety factor is applied. The clamps can withstand three times the maximum stringing tension indicated in this table (tests carried out on referenced cables).

Characteristics

	Dimensions (mm)				
	Reference	L*	l	E	d
	AC35 260	260	55	53	11
	AC68 260	260	55	53	11
	AC810 500	500	200	94	12

\* : Standard lengths. Other lengths possible depending on required bending radii. (please consult).

Clamp reference	Body (1)	Materials Wedges (2)	Bail (3)	Weight kg      lbs	Packaging unit
AC35 260	UV protected thermoplastic	UV protected thermoplastic	Stainless steel	0,110 – 0.25	100 pieces
AC68 260					
AC810 500				0,400 – 0.90	30 pieces