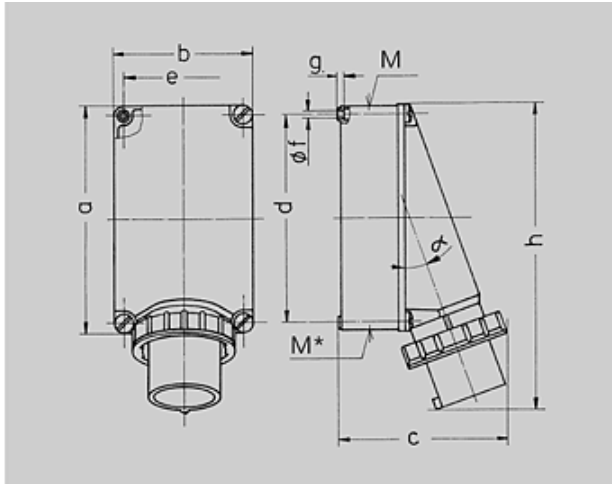




Part no. : 356

Wall mounted inlet


Drawing	Amp.	63			125	
		Poles			4	5
2 MB 36						
Dim. in mm						
a		170	170	170	264	264
b		118	118	118	163	163
c		171	171	171	205	205
d		136	136	136	240	240
e		104	104	104	140	140
f		6,1	6,1	6,1	8,1	8,1
g		6	6	6	8	8
h		250	250	250	355	355
M		40	40	40	50	50
M*		2x40	2x40	2x40	50	50
α		25°	25°	25°	20°	20°
Max. cabel diam. (mm)		32	32	32	38	38
Terminal for cond. cross section (mm²) min.-max.		4	4	4	16	16
		-10	-10	-10	-35	-35

 Article-group : **2048**

voltages : 230V

rated current : 63A

pole : 4 pole







IP protection types : IP67

position of ground contact : 9h

packing unit : 0005

weight : 855 g

PART NUMBERS

	V	110V	230V	400V	500V	>50-500V	
	Hz	50,60	50,60	50,60	50,60	100-300	300-500
	colour						
	amp.						
63 A	3	1216	1107	1217			
	4	355	356	357	358		
	5	359	360	361			
125 A	4	362	363	364	365		
	5	366	367	368			